

Data Mining

Lecture 3 (Decision Tree)

Classification: Definition

- Given a collection of records (*training set*)
 - Each record contains a set of *attributes*, one of the attributes is the *class*.
- Find a *model* for class attribute as a function of the values of other attributes.
- Goal: previously unseen records should be assigned a class as accurately as possible.
 - A *test set* is used to determine the accuracy of the model. Usually, the given data set is divided into training and test sets, with training set used to build the model and test set used to validate it.

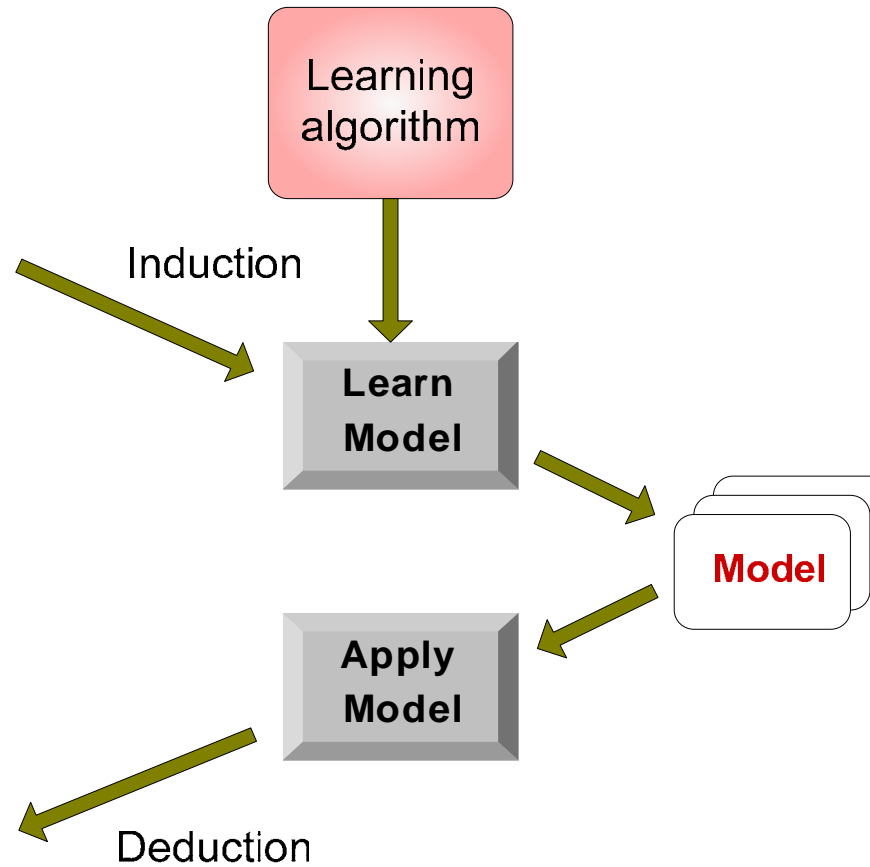
Illustrating Classification Task

Tid	Attrib1	Attrib2	Attrib3	Class
1	Yes	Large	125K	No
2	No	Medium	100K	No
3	No	Small	70K	No
4	Yes	Medium	120K	No
5	No	Large	95K	Yes
6	No	Medium	60K	No
7	Yes	Large	220K	No
8	No	Small	85K	Yes
9	No	Medium	75K	No
10	No	Small	90K	Yes

Training Set

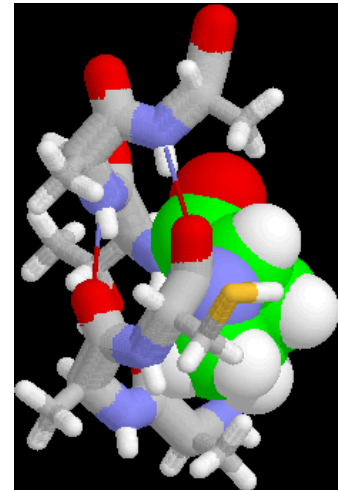
Tid	Attrib1	Attrib2	Attrib3	Class
11	No	Small	55K	?
12	Yes	Medium	80K	?
13	Yes	Large	110K	?
14	No	Small	95K	?
15	No	Large	67K	?

Test Set



Examples of Classification Task

- Predicting tumor cells as benign or malignant
- Classifying credit card transactions as legitimate or fraudulent
- Classifying secondary structures of protein as alpha-helix, beta-sheet, or random coil
- Categorizing news stories as finance, weather, entertainment, sports, etc

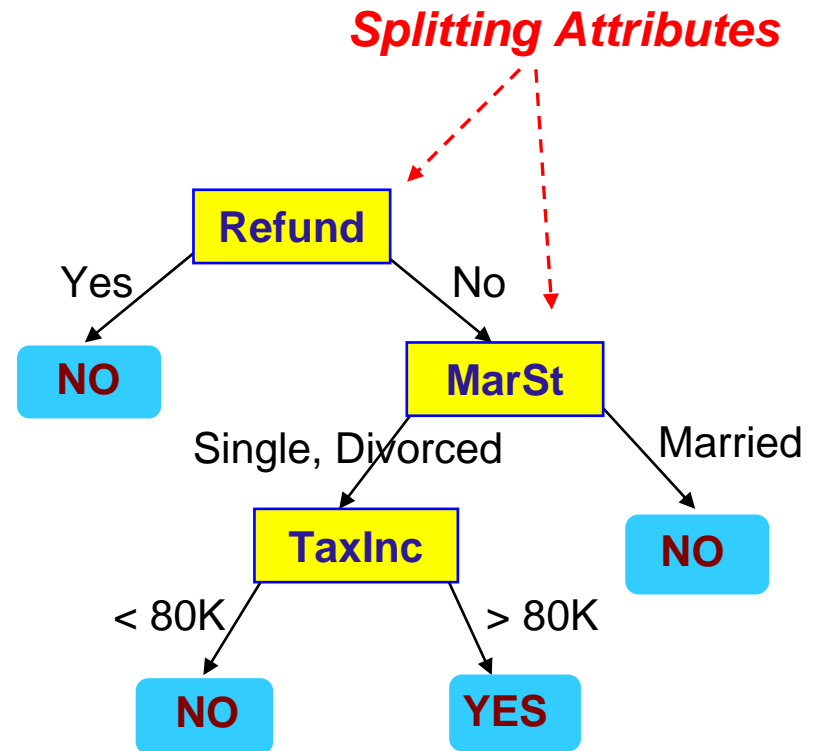


Example of a Decision Tree

categorical categorical continuous class

Tid	Refund	Marital Status	Taxable Income	Cheat
1	Yes	Single	125K	No
2	No	Married	100K	No
3	No	Single	70K	No
4	Yes	Married	120K	No
5	No	Divorced	95K	Yes
6	No	Married	60K	No
7	Yes	Divorced	220K	No
8	No	Single	85K	Yes
9	No	Married	75K	No
10	No	Single	90K	Yes

Training Data

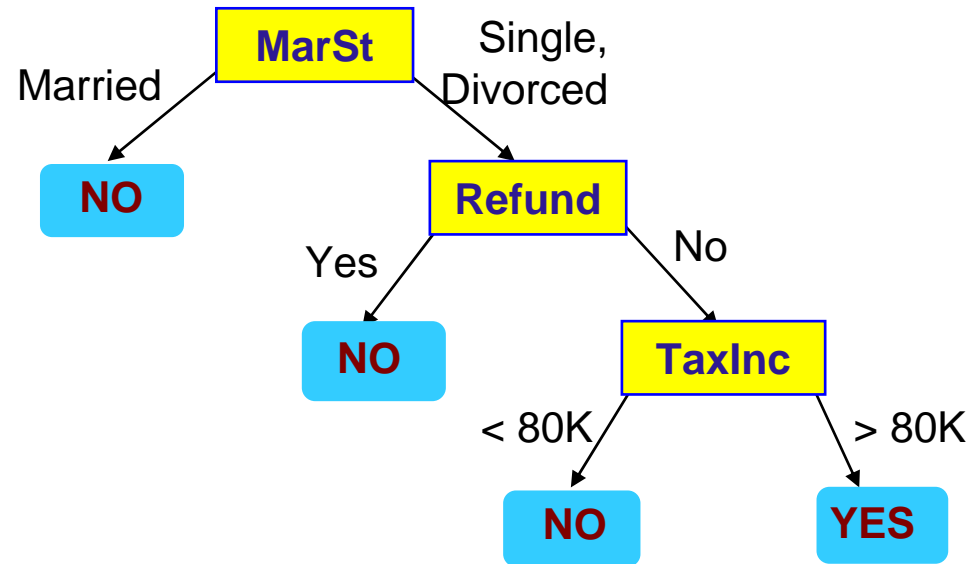


Model: Decision Tree

Another Example of Decision Tree

categorical
categorical
continuous
class

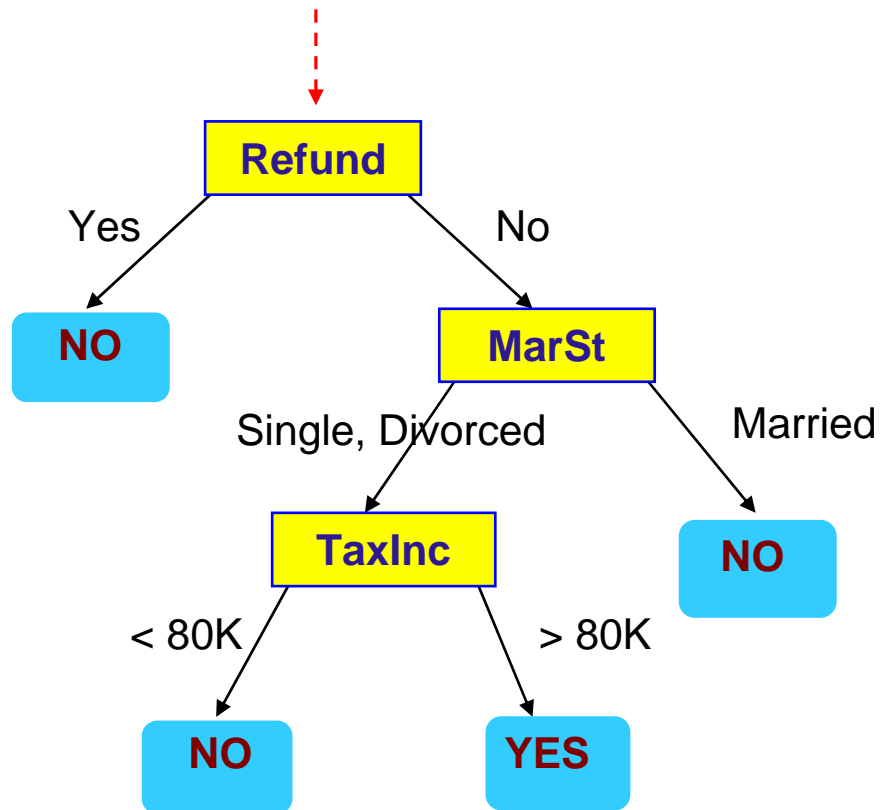
<i>Tid</i>	Refund	Marital Status	Taxable Income	Cheat
1	Yes	Single	125K	No
2	No	Married	100K	No
3	No	Single	70K	No
4	Yes	Married	120K	No
5	No	Divorced	95K	Yes
6	No	Married	60K	No
7	Yes	Divorced	220K	No
8	No	Single	85K	Yes
9	No	Married	75K	No
10	No	Single	90K	Yes



There could be more than one tree that fits the same data!

Apply Model to Test Data

Start from the root of tree.



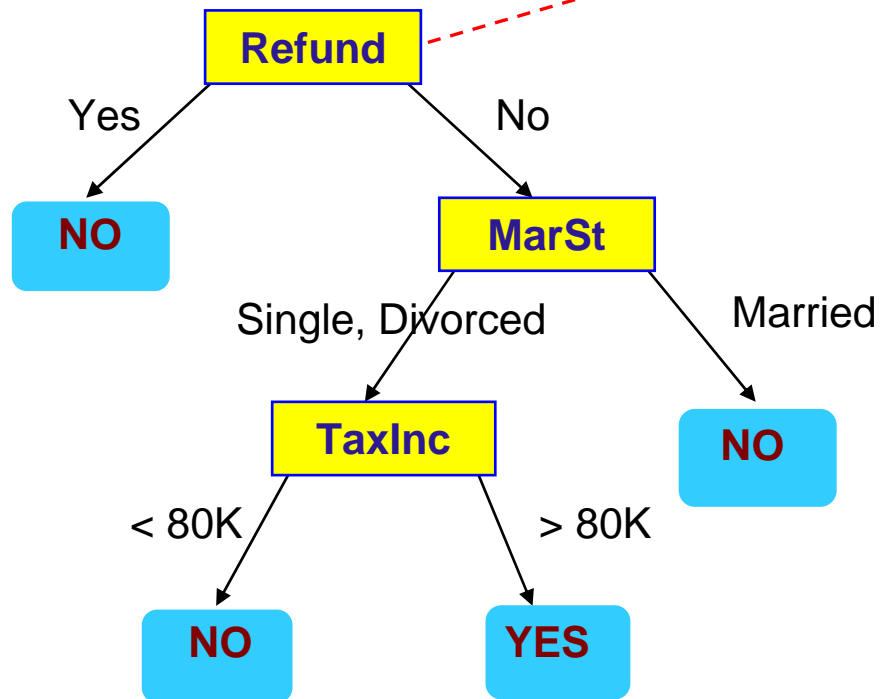
Test Data

Refund	Marital Status	Taxable Income	Cheat
No	Married	80K	?

Apply Model to Test Data

Test Data

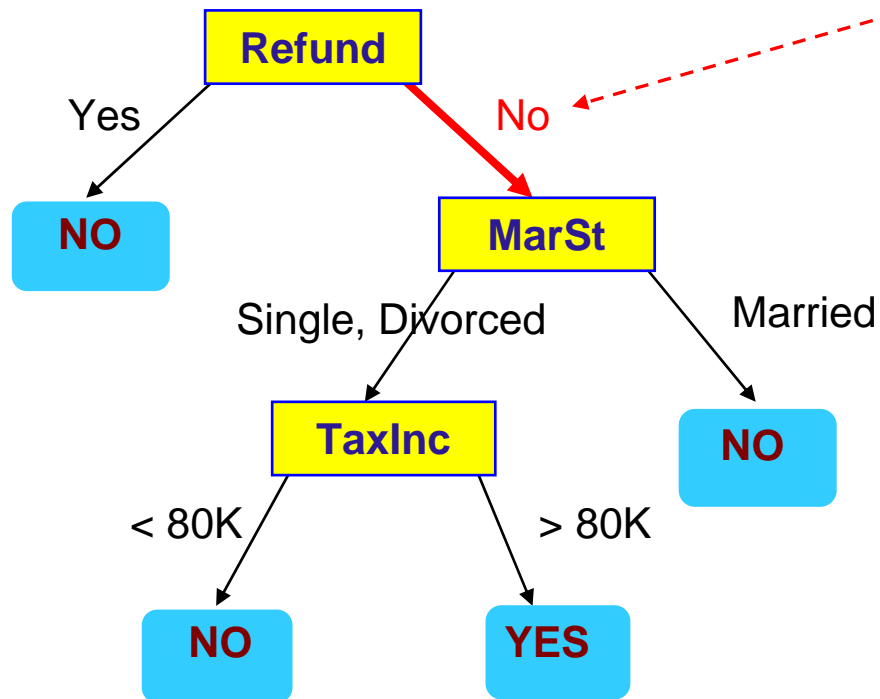
Refund	Marital Status	Taxable Income	Cheat
No	Married	80K	?



Apply Model to Test Data

Test Data

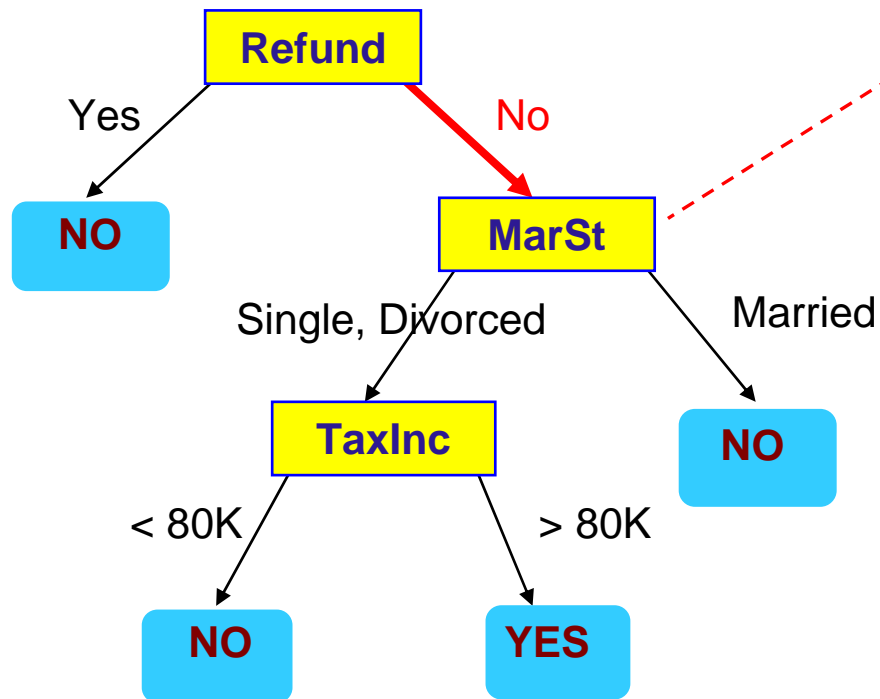
Refund	Marital Status	Taxable Income	Cheat
No	Married	80K	?



Apply Model to Test Data

Test Data

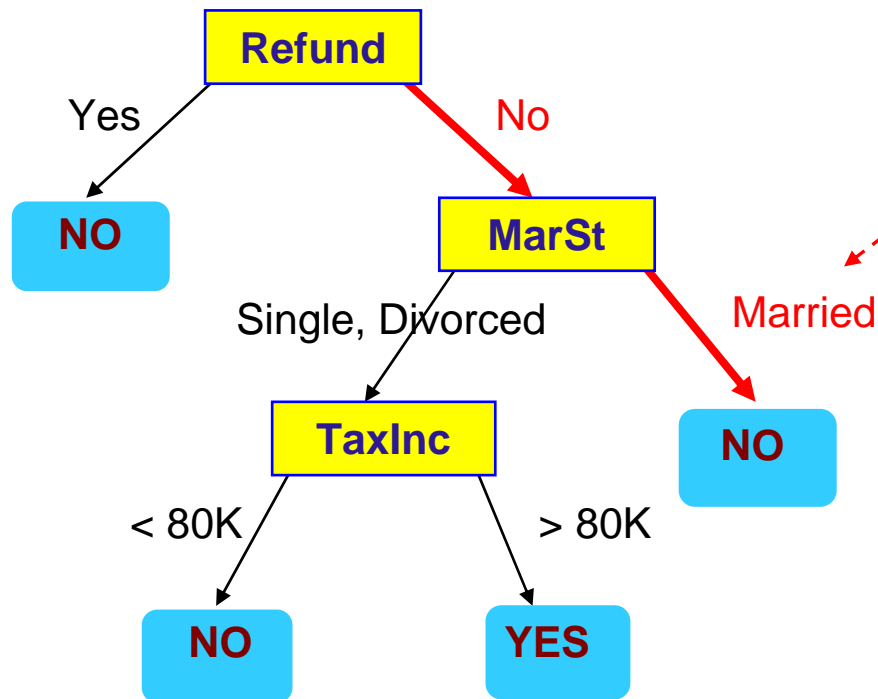
Refund	Marital Status	Taxable Income	Cheat
No	Married	80K	?



Apply Model to Test Data

Test Data

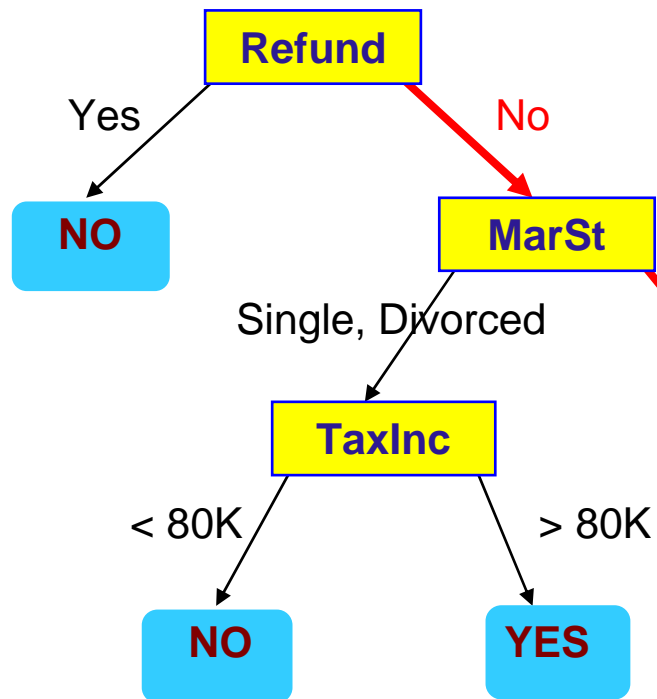
Refund	Marital Status	Taxable Income	Cheat
No	Married	80K	?



Apply Model to Test Data

Test Data

Refund	Marital Status	Taxable Income	Cheat
No	Married	80K	?



Assign Cheat to "No"

Tree Induction

- Greedy strategy.
 - Split the records based on an attribute test that optimizes certain criterion.
- Issues
 - Determine how to split the records
 - ◆ How to specify the attribute test condition?
 - ◆ How to determine the best split?
 - Determine when to stop splitting

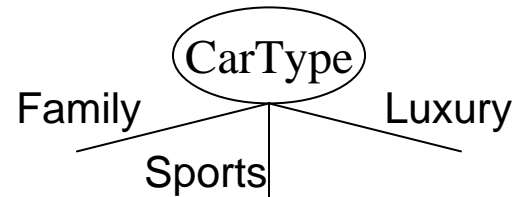
How to Specify Test Condition?

- Depends on attribute types
 - Nominal
 - Ordinal
 - Continuous

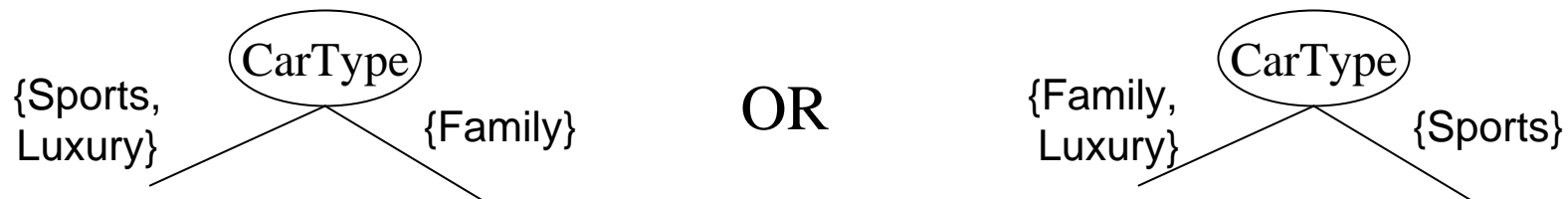
- Depends on number of ways to split
 - 2-way split
 - Multi-way split

Splitting Based on Nominal Attributes

- **Multi-way split:** Use as many partitions as distinct values.

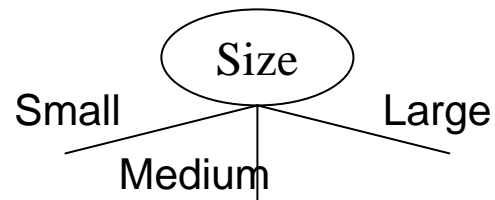


- **Binary split:** Divides values into two subsets. Need to find optimal partitioning.

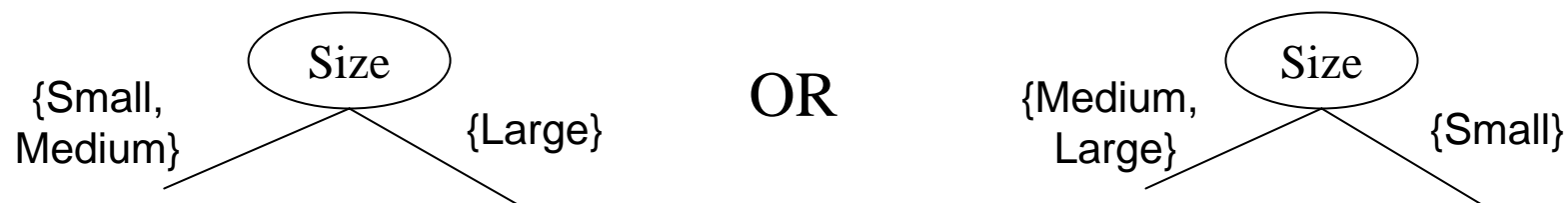


Splitting Based on Ordinal Attributes

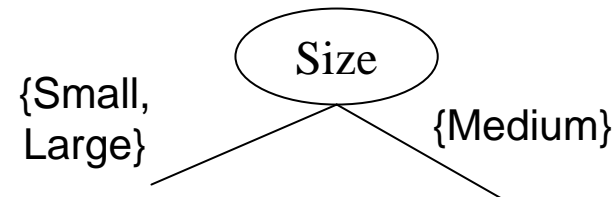
- **Multi-way split:** Use as many partitions as distinct values.



- **Binary split:** Divides values into two subsets.
Need to find optimal partitioning.



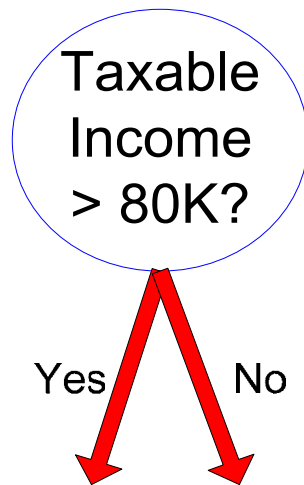
- What about this split?



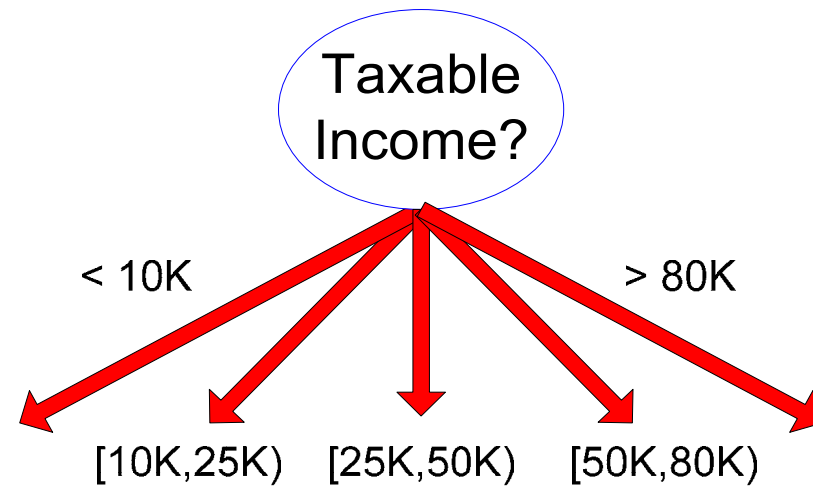
Splitting Based on Continuous Attributes

- Different ways of handling
 - **Discretization** to form an ordinal categorical attribute
 - ◆ Static – discretize once at the beginning
 - ◆ Dynamic – ranges can be found by equal interval bucketing, equal frequency bucketing (percentiles), or clustering.
 - **Binary Decision**: $(A < v)$ or $(A \geq v)$
 - ◆ consider all possible splits and finds the best cut
 - ◆ can be more compute intensive

Splitting Based on Continuous Attributes



(i) Binary split



(ii) Multi-way split

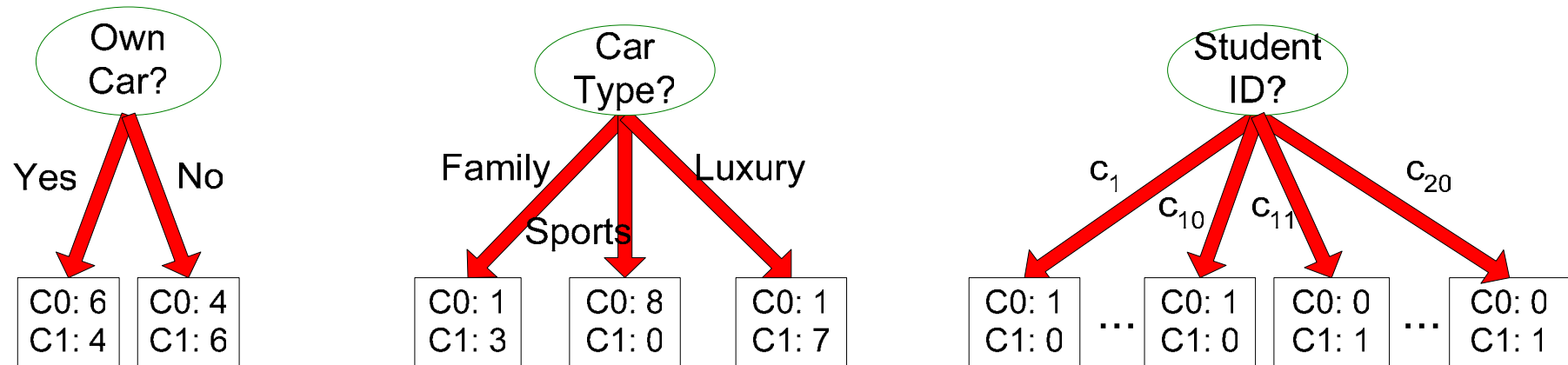
Tree Induction

- Greedy strategy.
 - Split the records based on an attribute test that optimizes certain criterion.

- Issues
 - Determine how to split the records
 - ◆ How to specify the attribute test condition?
 - ◆ **How to determine the best split?**
 - Determine when to stop splitting

How to determine the Best Split

Before Splitting: 10 records of class 0,
10 records of class 1



Which test condition is the best?

How to determine the Best Split

- Greedy approach:
 - Nodes with **homogeneous** class distribution are preferred
- Need a measure of node impurity:

C0: 5
C1: 5

**Non-homogeneous,
High degree of impurity**

C0: 9
C1: 1

**Homogeneous,
Low degree of impurity**

Measures of Node Impurity

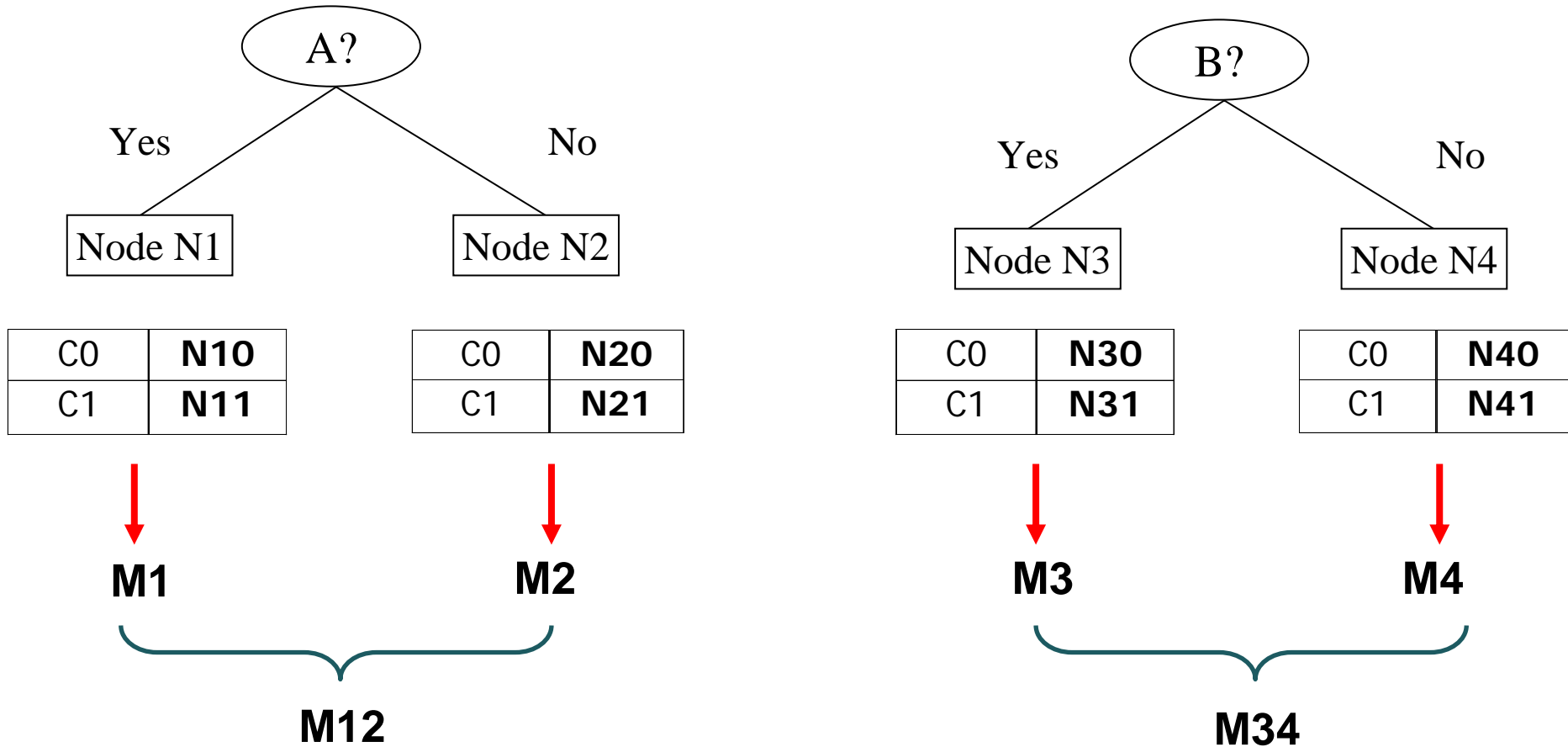
- Gini Index
- Entropy
- Misclassification error

How to Find the Best Split

Before Splitting:

C0	N00
C1	N01

→ M0



Gain = M0 – M12 vs M0 – M34

Measure of Impurity: GINI

- Gini Index for a given node t :

$$GINI(t) = 1 - \sum_j [p(j | t)]^2$$

(NOTE: $p(j | t)$ is the relative frequency of class j at node t).

- Maximum ($1 - 1/n_c$) when records are equally distributed among all classes, implying least interesting information
- Minimum (0.0) when all records belong to one class, implying most interesting information

C1	0
C2	6
Gini=0.000	

C1	1
C2	5
Gini=0.278	

C1	2
C2	4
Gini=0.444	

C1	3
C2	3
Gini=0.500	

Examples for computing GINI

$$GINI(t) = 1 - \sum_j [p(j|t)]^2$$

C1	0
C2	6

$$P(C1) = 0/6 = 0 \quad P(C2) = 6/6 = 1$$

$$Gini = 1 - P(C1)^2 - P(C2)^2 = 1 - 0 - 1 = 0$$

C1	1
C2	5

$$P(C1) = 1/6 \quad P(C2) = 5/6$$

$$Gini = 1 - (1/6)^2 - (5/6)^2 = 0.278$$

C1	2
C2	4

$$P(C1) = 2/6 \quad P(C2) = 4/6$$

$$Gini = 1 - (2/6)^2 - (4/6)^2 = 0.444$$

Splitting Based on GINI

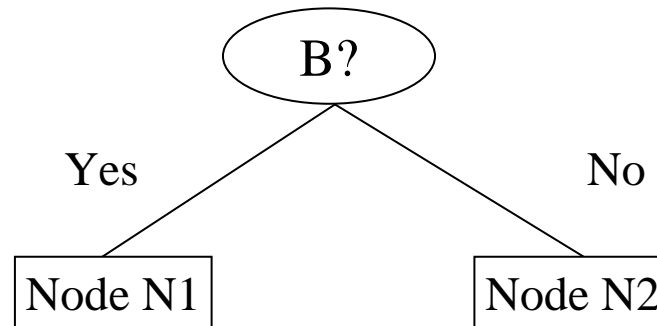
- Used in CART, SLIQ, SPRINT.
- When a node p is split into k partitions (children), the quality of split is computed as,

$$GINI_{split} = \sum_{i=1}^k \frac{n_i}{n} GINI(i)$$

where, n_i = number of records at child i ,
 n = number of records at node p .

Binary Attributes: Computing GINI Index

- Splits into two partitions
- Effect of Weighing partitions:
 - Larger and Purer Partitions are sought for.



	Parent
C1	6
C2	6
Gini = 0.500	

$$\begin{aligned} \text{Gini}(N1) &= 1 - (5/6)^2 - (1/6)^2 \\ &= 0.278 \end{aligned}$$

$$\begin{aligned} \text{Gini}(N2) &= 1 - (2/6)^2 - (4/6)^2 \\ &= 0.444 \end{aligned}$$

	N1	N2
C1	5	2
C2	1	4
Gini=0.361		

$$\begin{aligned} \text{Gini(Children)} &= 6/12 * 0.278 + \\ &\quad 6/12 * 0.444 \\ &= 0.361 \end{aligned}$$

Categorical Attributes: Computing Gini Index

- For each distinct value, gather counts for each class in the dataset
- Use the count matrix to make decisions

Multi-way split

	CarType		
	Family	Sports	Luxury
C1	1	2	1
C2	4	1	1
Gini	0.393		

Two-way split
(find best partition of values)

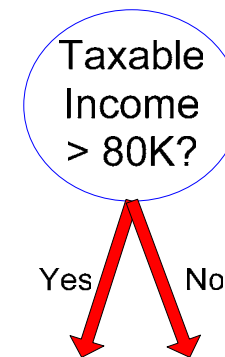
	CarType	
	{Sports, Luxury}	{Family}
C1	3	1
C2	2	4
Gini	0.400	

	CarType	
	{Sports}	{Family, Luxury}
C1	2	2
C2	1	5
Gini	0.419	

Continuous Attributes: Computing Gini Index

- Use Binary Decisions based on one value
- Several Choices for the splitting value
 - Number of possible splitting values = Number of distinct values
- Each splitting value has a count matrix associated with it
 - Class counts in each of the partitions, $A < v$ and $A \geq v$
- Simple method to choose best v
 - For each v , scan the database to gather count matrix and compute its Gini index
 - Computationally Inefficient! Repetition of work.

<i>Tid</i>	Refund	Marital Status	Taxable Income	Cheat
1	Yes	Single	125K	No
2	No	Married	100K	No
3	No	Single	70K	No
4	Yes	Married	120K	No
5	No	Divorced	95K	Yes
6	No	Married	60K	No
7	Yes	Divorced	220K	No
8	No	Single	85K	Yes
9	No	Married	75K	No
10	No	Single	90K	Yes



Continuous Attributes: Computing Gini Index...

- For efficient computation: for each attribute,
 - Sort the attribute on values
 - Linearly scan these values, each time updating the count matrix and computing gini index
 - Choose the split position that has the least gini index

Cheat		No	No	No	Yes	Yes	Yes	No	No	No	No												
		Taxable Income																					
Sorted Values	→	60	70	75	85	90	95	100	120	125	220												
Split Positions	→	55		65		72		80		87		92		97		110		122		172		230	
		<=	>	<=	>	<=	>	<=	>	<=	>	<=	>	<=	>	<=	>	<=	>	<=	>	<=	>
Yes		0	3	0	3	0	3	0	3	1	2	2	1	3	0	3	0	3	0	3	0	3	0
No		0	7	1	6	2	5	3	4	3	4	3	4	3	4	4	3	5	2	6	1	7	0
Gini		0.420		0.400		0.375		0.343		0.417		0.400		<u>0.300</u>		0.343		0.375		0.400		0.420	

Alternative Splitting Criteria based on INFO

- Entropy at a given node t :

$$Entropy(t) = -\sum_j p(j | t) \log p(j | t)$$

(NOTE: $p(j | t)$ is the relative frequency of class j at node t).

- Measures homogeneity of a node.
 - ◆ Maximum ($\log n_c$) when records are equally distributed among all classes implying least information
 - ◆ Minimum (0.0) when all records belong to one class, implying most information
- Entropy based computations are similar to the GINI index computations

Examples for computing Entropy

$$Entropy(t) = -\sum_j p(j|t) \log_2 p(j|t)$$

C1	0
C2	6

$$P(C1) = 0/6 = 0 \quad P(C2) = 6/6 = 1$$

$$Entropy = -0 \log 0 - 1 \log 1 = -0 - 0 = 0$$

C1	1
C2	5

$$P(C1) = 1/6 \quad P(C2) = 5/6$$

$$Entropy = - (1/6) \log_2 (1/6) - (5/6) \log_2 (5/6) = 0.65$$

C1	2
C2	4

$$P(C1) = 2/6 \quad P(C2) = 4/6$$

$$Entropy = - (2/6) \log_2 (2/6) - (4/6) \log_2 (4/6) = 0.92$$

Splitting Based on INFO...

- Information Gain:

$$GAIN_{split} = Entropy(p) - \left(\sum_{i=1}^k \frac{n_i}{n} Entropy(i) \right)$$

Parent Node, p is split into k partitions;

n_i is number of records in partition i

- Measures Reduction in Entropy achieved because of the split. Choose the split that achieves most reduction (maximizes GAIN)
- Used in ID3 and C4.5
- Disadvantage: Tends to prefer splits that result in large number of partitions, each being small but pure.

Splitting Criteria based on Classification Error

- Classification error at a node t :

$$Error(t) = 1 - \max_i P(i | t)$$

- Measures misclassification error made by a node.
 - ◆ Maximum $(1 - 1/n_c)$ when records are equally distributed among all classes, implying least interesting information
 - ◆ Minimum (0.0) when all records belong to one class, implying most interesting information

Examples for Computing Error

$$Error(t) = 1 - \max_i P(i | t)$$

C1	0
C2	6

$$P(C1) = 0/6 = 0 \quad P(C2) = 6/6 = 1$$

$$Error = 1 - \max(0, 1) = 1 - 1 = 0$$

C1	1
C2	5

$$P(C1) = 1/6 \quad P(C2) = 5/6$$

$$Error = 1 - \max(1/6, 5/6) = 1 - 5/6 = 1/6$$

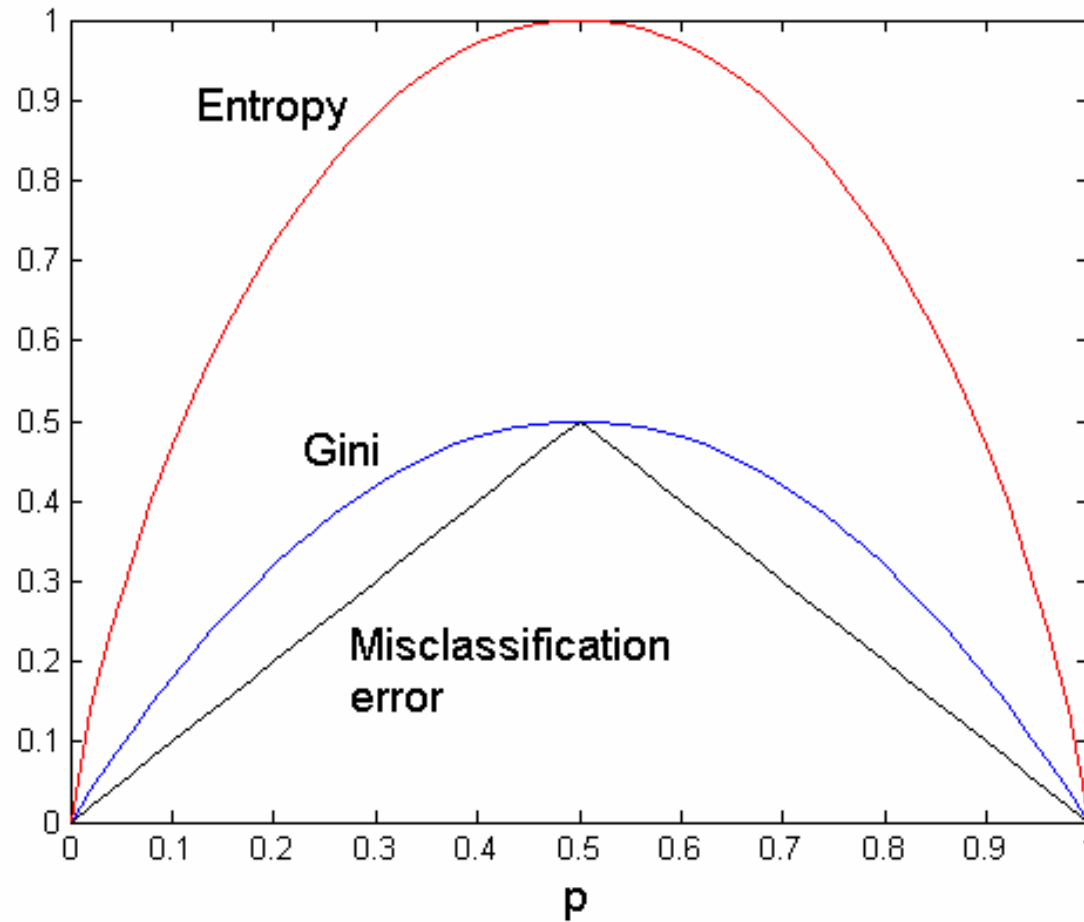
C1	2
C2	4

$$P(C1) = 2/6 \quad P(C2) = 4/6$$

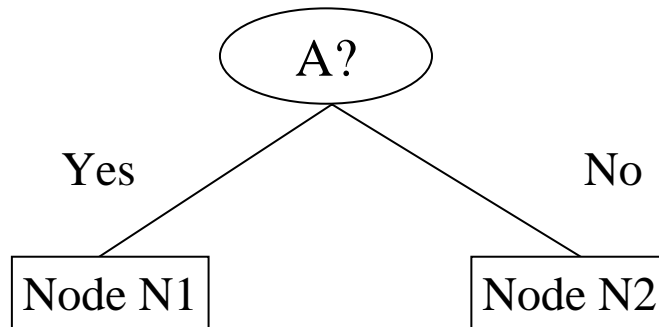
$$Error = 1 - \max(2/6, 4/6) = 1 - 4/6 = 1/3$$

Comparison among Splitting Criteria

For a 2-class problem:



Misclassification Error vs Gini



	Parent
C1	7
C2	3
Gini = 0.42	

$$\begin{aligned}
 &\mathbf{Gini(N1)} \\
 &= 1 - (3/3)^2 - (0/3)^2 \\
 &= 0
 \end{aligned}$$

	N1	N2
C1	3	4
C2	0	3
Gini=0.361		

$$\begin{aligned}
 &\mathbf{Gini(N2)} \\
 &= 1 - (4/7)^2 - (3/7)^2 \\
 &= 0.489
 \end{aligned}$$

$$\begin{aligned}
 &\mathbf{Gini(Children)} \\
 &= 3/10 * 0 \\
 &+ 7/10 * 0.489 \\
 &= 0.342
 \end{aligned}$$

Gini improves !!

Tree Induction

- Greedy strategy.
 - Split the records based on an attribute test that optimizes certain criterion.

- Issues
 - Determine how to split the records
 - ◆ How to specify the attribute test condition?
 - ◆ How to determine the best split?
 - Determine when to stop splitting

Stopping Criteria for Tree Induction

- Stop expanding a node when all the records belong to the same class
- Stop expanding a node when all the records have similar attribute values
- Early termination (to be discussed later)

Decision Tree Based Classification

- Advantages:
 - Inexpensive to construct
 - Extremely fast at classifying unknown records
 - Easy to interpret for small-sized trees
 - Accuracy is comparable to other classification techniques for many simple data sets